

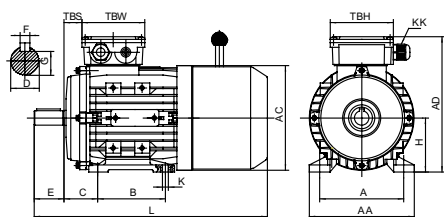
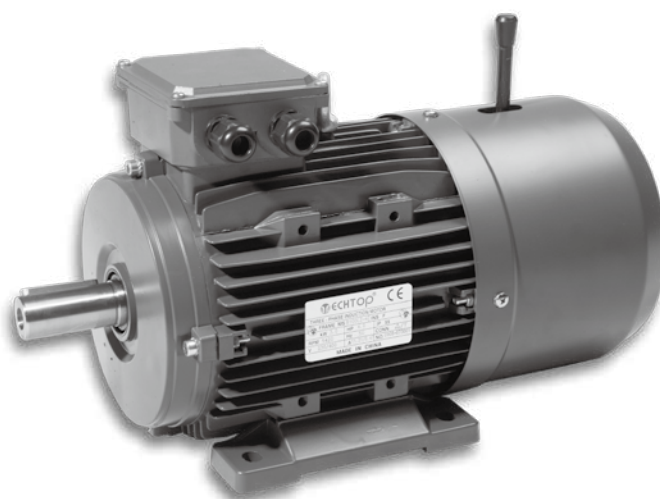
MSBCCL Series

Asynchronous Three-Phase Brake Motors With Squirrel Cage Rotor - Direct Current Brake

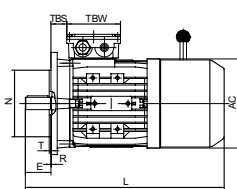
MSBCCL series-enclosed construction externally ventilated-sizes 63~160

The brake-motors of the MSBCCL series result from coupling an asynchronous three-phase motor and an electromagnetic D.C. brake unit. Due to their reliability and operating safety, as well as their quick braking time (connection & disconnection time = 5~80 milliseconds) they are suitable for a great variety of applications, such as:

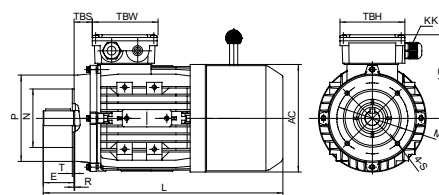
- Braking of loads or torques on the driving shaft.
- Braking of rotating masses to reduce any lost-time.
- Braking operations to increase the set-up precision.
- Braking of machine parts, according to safety rules.



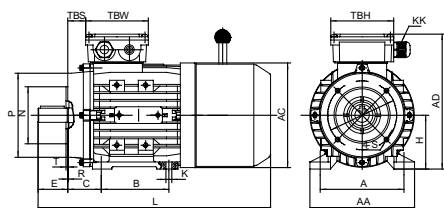
IM B3



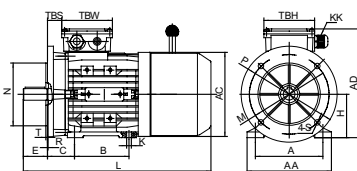
IM B5



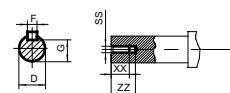
IM B14



IM B34



IM B35





Overall & Installation Dimensions

FRAME	Foot Mounting				Shaft								General							
	H	A	B	C	D	E	F	G	K	SS	XX	ZZ	AA	AD	HD	AC	L	TBS	TBW	TBH
56	56	90	71	36	Φ9	20	3	7.2	5.8*8.8	M4	9	12	110	152	96	Φ110	233	14	88	88
63	63	100	80	40	Φ11	23	4	8.5	7*10	M4	10	14	124	169	106	Φ121	265	14	94	94
71 ^{☆☆}	71	112	90	45	Φ14	30	5	11	7*10	M5	12	17	140	184	113	Φ139	287/301	20	94	94
80	80	125	100	50	Φ19	40	6	15.5	10*13	M6	16	21	160	211	131	Φ156	340	27	105	105
90S	90	140	100	56	Φ24	50	8	20	10*13	M8	19	25	175	228	138	Φ175	356	30	105	105
90L1/L2	90	140	125	56	Φ24	50	8	20	10*13	M8	19	25	175	228	138	Φ175	381/411	30	105	105
100 ^{☆☆}	100	160	140	63	Φ28	60	8	24	12*15	M10	22	30	200	248	148	Φ196	434/452	26	105	105
112	112	190	140	70	Φ28	60	8	24	12*15	M10	22	30	230	278	166	Φ221	465	32	112	112
132S	132	216	140	89	Φ38	80	10	33	12*15	M12	28	37	255	316	184	Φ256	518	38	112	112
132M/L	132	216	178	89	Φ38	80	10	33	12*15	M12	28	37	255	316	184	Φ256	556/582	38	112	112
160M/L	160	254	210/254	108	Φ42	110	12	37	15*19	M16	36	45	314	282	222	Φ313	701	64	143	143

FRAME	KK	B5						B14						B5R						B14B					
		N	M	P	S	T	R	N	M	P	S	T	R	N	M	P	T	S	R	N	M	P	T	S	R
56	1-M16*1.5	Φ80	Φ100	Φ120	Φ7	3	0	Φ50	Φ65	Φ80	M5	2.5	0												
63	1-M16*1.5	Φ95	Φ115	Φ140	Φ10	3	0	Φ60	Φ75	Φ90	M5	2.5	0												
71	1-M20*1.5	Φ110	Φ130	Φ160	Φ10	3.5	0	Φ70	Φ85	Φ105	M6	2.5	0	Φ95	Φ115	Φ140	3	Φ10	0	Φ95	Φ115	Φ140	3	M8	0
80	1-M20*1.5	Φ130	Φ165	Φ200	Φ12	3.5	0	Φ80	Φ100	Φ120	M6	3	0	Φ110	Φ130	Φ160	3.5	Φ10	0	Φ110	Φ130	Φ160	3.5	M8	0
90	1-M20*1.5	Φ130	Φ165	Φ200	Φ12	3.5	0	Φ95	Φ115	Φ140	M8	3	0	Φ110	Φ130	Φ160	3.5	Φ10	0	Φ110	Φ130	Φ160	3.5	M8	0
100	2-M20*1.5	Φ180	Φ215	Φ250	Φ15	4	0	Φ110	Φ130	Φ160	M8	3.5	0	Φ130	Φ165	Φ200	3.5	Φ12	0	Φ130	Φ165	Φ200	3.5	M10	0
112	2-M25*1.5	Φ180	Φ215	Φ250	Φ15	4	0	Φ110	Φ130	Φ160	M8	3.5	0	Φ130	Φ165	Φ200	3.5	Φ12	0	Φ130	Φ165	Φ200	3.5	M10	0
132	2-M25*1.5	Φ230	Φ265	Φ300	Φ15	4	0	Φ130	Φ165	Φ200	M10	3.5	0	Φ180	Φ215	Φ250	4	Φ15	0	Φ180	Φ215	Φ250	4	M12	0
160	2-M32*1.5	Φ250	Φ300	Φ350	Φ19	5	0	Φ180	Φ215	Φ250	M12	4	0												

IEC MOTOR

FIRE PUMP MOTOR

GOST MOTOR

NEMA MOTOR

DC MOTOR

EC MOTOR

R EACH brake data

Frame size	Brake type	Brake torque (Speed 100r/min) (Nm)	Brake rated power(20°C) (W)	Delay time when power on (ms)	Brake time (ms)	Pick in time when power off (ms)
56-71	06	4	20	15	30	40
80	08	8	25	15	32	50
90	10	16	30	25	45	69
100	12	32	40	26	56	108
112	14	60	50	27	57	190
132	16	80	55	30	60	200
160	18	150	85	35	78	260

I NTORQ brake data

Frame size	Brake type	Brake torque (Speed 100r/min) (Nm)	Brake rated power(20°C) (W)	Delay time when power on (ms)	Brake time (ms)	Pick in time when power off (ms)
56-71	06	4	20	10	23	52
80	08	8	25	15	31	60
90	10	16	30	31	50	65
100	12	32	40	39	64	145
112	14	60	50	26	51	205
132	16	80	55	40	70	258

MSB Series Motors Technical Data (at 50Hz)

Model	Power (kW)	Current (A)			Current (A)			Current (A)			Speed (r/min)	Eff			Power factor	Tst/Tn (Times)	Tmax/Tn (Times)	Tmin/Tn (Times)	Ist/In (Times)	Noise dB(A)
		220V	380V	660V	230V	400V	690V	240V	415V	720V		100%	75%	50%						
MSB 631-2	0.18	0.92	0.53	0.31	0.88	0.51	0.29	0.85	0.49	0.28	2780	66.5	64.2	56.8	0.77	2.3	2.5	2.4	4.1	61
MSB 632-2	0.25	1.19	0.69	0.40	1.14	0.65	0.38	1.09	0.63	0.36	2780	69.8	68.8	62.8	0.79	2.6	2.5	2.4	4.3	61
MSB 633-2	0.37	1.72	1.00	0.57	1.65	0.95	0.55	1.58	0.91	0.53	2750	71.4	71.2	65.9	0.79	2.8	2.6	2.6	4.7	62
MSB 711-2	0.37	1.70	0.99	0.57	1.63	0.94	0.54	1.56	0.90	0.52	2830	71.3	70.4	65.2	0.8	2.8	2.9	2	5.9	64
MSB 712-2	0.55	2.52	1.46	0.84	2.41	1.39	0.80	2.31	1.34	0.77	2815	71.6	71	66.1	0.8	2.7	2.7	1.8	6	64
MSB 713-2	0.75	3.25	1.88	1.08	3.11	1.79	1.04	2.98	1.72	0.99	2820	73.8	73.9	70.3	0.82	3.0	3.0	2.0	6.6	65
MSB 801-2	0.75	3.15	1.83	1.05	3.02	1.73	1.01	2.89	1.67	0.96	2830	75.2	75.6	72.2	0.83	3	2.8	2	6.2	67
MSB 802-2	1.1	4.40	2.55	1.47	4.21	2.42	1.40	4.04	2.33	1.35	2840	79	79.8	77.7	0.83	2.6	3.1	2.6	6.1	67
MSB 803-2	1.5	5.70	3.30	1.90	5.46	3.14	1.82	5.23	3.02	1.74	2820	81.2	82.5	81.3	0.85	3.2	3	2.5	7.2	70
MSB 90S-2	1.5	5.73	3.32	1.91	5.48	3.15	1.83	5.25	3.04	1.75	2850	80.8	81.2	78.9	0.85	2.8	3.3	2.6	7.7	72
MSB 90L1-2	2.2	8.19	4.74	2.73	7.84	4.51	2.61	7.51	4.34	2.50	2860	82.9	83.4	81.4	0.85	3.7	3.9	3.3	8.8	72
MSB 90L2-2	3	11.1	6.43	3.70	10.6	6.11	3.54	10.2	5.89	3.39	2830	82.4	83.5	82.3	0.86	4.4	4.2	3.5	8	74
MSB 100L1-2	3	10.9	6.32	3.64	10.4	6.00	3.48	10.0	5.78	3.33	2875	83.9	84.5	83	0.86	2.8	3.2	2	8.1	76
MSB 100L2-2	4	13.8	7.99	4.60	13.2	7.59	4.40	12.6	7.31	4.22	2870	85.5	86.5	85.8	0.89	3.2	3.4	2.2	8.8	77
MSB 112M-2	4	13.2	7.63	4.40	12.6	7.25	4.20	12.1	6.99	4.03	2870	85.6	87.0	86.8	0.93	2.6	2.85	1.75	8.1	77
MSB 112L-2	5.5	18.0	10.4	6.00	17.2	9.9	5.74	16.5	9.5	5.50	2890	87.1	88	87.6	0.92	3.1	3.3	2	9.4	78
MSB 132S1-2	5.5	18.5	10.7	6.17	17.7	10.2	5.90	17.0	9.8	5.65	2900	86.6	87.4	86.5	0.90	2.25	3.1	1.5	7.9	80
MSB 132S2-2	7.5	24.6	14.2	8.19	23.5	13.5	7.84	22.5	13.0	7.51	2900	88.0	88.8	88.3	0.91	2.4	3.25	1.5	8.5	80
MSB 132M1-2	9.2	30.8	17.8	10.3	29.5	17.0	9.83	28.3	16.3	9.42	2930	88	88	86.4	0.89	2	2.2	1.2	7.5	81
MSB 132M2-2	11	36.3	21.0	12.1	34.7	20.0	11.6	33.3	19.2	11.1	2930	88.4	88.6	87.5	0.9	2	2.2	1.2	7.5	83
MSB 160M1-2	11	36.4	21.1	12.1	34.8	20.0	11.6	33.4	19.3	11.1	2920	88.8	89.4	88.6	0.89	2.6	2.95	1.85	7.1	86
MSB 160M2-2	15	49.3	28.5	16.4	47.2	27.1	15.7	45.2	26.1	15.1	2910	89.1	90.0	89.6	0.90	2.2	2.8	1.8	6.4	86
MSB 160L-2	18.5	59.3	34.4	19.8	56.8	32.6	18.9	54.4	31.5	18.1	2930	90.3	90.9	90.3	0.91	2.9	3.05	1.65	8.4	86
MSB 631-4	0.12	0.89	0.51	0.30	0.85	0.49	0.28	0.81	0.47	0.27	1390	58.5	54.3	45.6	0.61	2.65	2.8	2.7	3.2	52
MSB 632-4	0.18	1.15	0.67	0.38	1.10	0.63	0.37	1.06	0.61	0.35	1365	64.2	62.5	55.9	0.64	2.8	2.55	2.4	3.6	52
MSB 633-4	0.25	1.45	0.84	0.48	1.39	0.80	0.46	1.33	0.77	0.44	1370	68.3	67.5	62.1	0.66	2.7	2.7	2.4	3.9	54
MSB 711-4	0.25	1.38	0.80	0.46	1.32	0.76	0.44	1.27	0.73	0.42	1395	65.1	63.1	55.8	0.73	2	2.15	1.6	4.2	55
MSB 712-4	0.37	1.90	1.10	0.63	1.82	1.05	0.61	1.74	1.01	0.58	1390	68.6	68.2	62.9	0.74	2.25	2.35	1.95	4.6	55
MSB 713-4	0.55	2.81	1.63	0.94	2.69	1.54	0.90	2.57	1.49	0.86	1390	71.9	71.6	66.8	0.72	2.8	2.8	2.4	4.8	57
MSB 801-4	0.55	2.74	1.59	0.91	2.62	1.51	0.87	2.51	1.45	0.84	1400	70.9	70.5	65.5	0.74	2.25	2.55	1.95	4.9	58
MSB 802-4	0.75	3.36	1.94	1.12	3.21	1.85	1.07	3.08	1.78	1.03	1390	74.4	76.0	73.9	0.79	2.5	2.55	2.05	5.4	58
MSB 803-4	1.1	4.90	2.84	1.63	4.69	2.69	1.56	4.49	2.60	1.50	1390	74.6	75.7	73.3	0.79	2.9	2.9	2.4	5.9	60
MSB 90S-4	1.1	4.90	2.83	1.63	4.68	2.69	1.56	4.49	2.60	1.50	1400	75.5	76.7	74.4	0.78	2.9	2.7	2.15	6	61
MSB 90L1-4	1.5	6.48	3.75	2.16	6.20	3.56	2.07	5.94	3.44	1.98	1410	79.6	80.2	78.0	0.76	3.4	3.3	2.7	6.9	61
MSB 90L2-4	2.2	9.76	5.65	3.25	9.33	5.37	3.11	8.94	5.17	2.98	1410	78.9	79.4	77	0.75	3.8	2.6	3.2	7.2	63
MSB 100L1-4	2.2	8.71	5.05	2.90	8.34	4.79	2.78	7.99	4.62	2.66	1420	82.0	83.3	82.3	0.81	2.4	2.7	2.15	6.3	64
MSB 100L2-4	3	11.5	6.64	3.82	11.0	6.31	3.66	10.5	6.08	3.51	1430	83.7	84.8	83.8	0.82	2.6	3	2.15	6.8	64
MSB 100L3-4	4	15.2	8.80	5.07	14.5	8.36	4.85	13.9	8.06	4.65	1430	84.2	85.5	85.3	0.82	2.2	2.3	1.5	7	65
MSB 112M-4	4	14.9	8.60	4.95	14.2	8.17	4.74	13.6	7.88	4.54	1440	84.7	86.0	85.4	0.83	2.5	2.9	2.05	7.1	65
MSB 112L-4	5.5	20.4	11.8	6.81	19.5	11.2	6.51	18.7	10.8	6.24	1435	85.9	87.1	86.6	0.82	2.5	2.95	2.2	7.2	68
MSB 132S-4	5.5	19.6	11.4	6.54	18.76	10.8	6.25	18.0	10.4	5.99	1445	86.4	87.8	87.7	0.85	2.15	2.85	1.75	7.5	71
MSB 132M-4	7.5	25.9	15.0	8.62	24.7	14.2	8.24	23.7	13.7	7.90	1450	87.6	88.8	88.5	0.87	2.1	2.9	1.65	8.6	71
MSB 132L1-4	9.2	31.3	18.1	10.4	30.0	17.2	10.0	28.7	16.6	9.6	1450	88.6	89.5	89.1	0.87	2.8	2.4	2	8.4	74
MSB 132L2-4	11	37.3	21.6	12.4	35.6	20.5	11.9	34.2	19.8	11.4	1450	90.1	91.1	91	0.86	3	2.5	2	8.9	74
MSB 160M-4	11	39.7	23.0	13.2	37.9	21.8	12.6	36.4	21.0	12.1	1450	87.7	89.6	90.3	0.83	2.05	2.25	1.55	6.1	75
MSB 160L1-4	15	51.9	30.1	17.3	49.7	28.5	16.6	47.6	27.5	15.9	1455	88.7	90.0	90.2	0.86	2.2	2.45	1.4	7.3	75
MSB 160L2-4	18.5	63.1	36.5	21.0	60.4	34.7	20.1	57.9	33.5	19.3	1460	90.5	91	90.6	0.85	2.2	2.2	1.4	7.5	78

IEC MOTOR

FIRE PUMP MOTOR

GOST MOTOR

NEMA MOTOR

DC MOTOR

EC MOTOR



MSB Series Motors Technical Data (at 50Hz)

Model	Power (kW)	Current (A)			Current (A)			Current (A)			Speed (r/min)	Eff			Power factor	Tst/Tn (Times)	Tmax/Tn (Times)	Tmin/Tn (Times)	Ist/In (Times)	Noise dB(A)
		220V	380V	660V	230V	400V	690V	240V	415V	720V		100%	75%	50%						
MSB 631-6	0.09	0.75	0.44	0.25	0.72	0.41	0.24	0.69	0.40	0.23	890	50.7	47.6	39.8	0.62	2	2.2	1.9	2.9	50
MSB 632-6	0.12	0.97	0.56	0.32	0.93	0.54	0.31	0.89	0.52	0.30	895	53.7	50.9	43.2	0.60	2.3	2.2	2.1	2.8	50
MSB 711-6	0.18	1.11	0.64	0.37	1.06	0.61	0.35	1.02	0.59	0.34	905	63.0	61.6	55.4	0.67	2.15	2.4	2	3.5	52
MSB 712-6	0.25	1.56	0.90	0.52	1.49	0.86	0.50	1.43	0.83	0.48	885	62.6	62.0	55.8	0.67	2.05	2.3	2.05	3.2	52
MSB 713-6	0.37	2.32	1.34	0.77	2.22	1.28	0.74	2.13	1.23	0.71	890	65.4	64.4	58.2	0.64	2.3	2.5	2.3	3.4	54
MSB 801-6	0.37	2.06	1.19	0.69	1.97	1.13	0.66	1.89	1.09	0.63	920	68.1	67.7	62.2	0.69	1.95	2.25	1.8	3.7	56
MSB 802-6	0.55	2.74	1.59	0.91	2.62	1.51	0.87	2.51	1.45	0.84	920	72.5	73.0	69.3	0.73	2.25	2.45	2.05	4.3	56
MSB 803-6	0.75	3.65	2.11	1.22	3.49	2.01	1.16	3.34	1.93	1.11	910	72.9	74.2	71.3	0.74	2.2	2.4	2.1	4.1	58
MSB 90S-6	0.75	3.83	2.22	1.28	3.67	2.11	1.22	3.52	2.03	1.17	920	72.5	73.3	70.0	0.71	1.8	2.2	1.7	4.1	59
MSB 90L1-6	1.1	5.47	3.17	1.82	5.23	3.01	1.74	5.01	2.90	1.67	910	73.5	75.2	72.9	0.72	1.95	2.25	1.85	4.2	59
MSB 90L2-6	1.5	7.12	4.12	2.37	6.81	3.92	2.27	6.53	3.78	2.18	900	74.7	77	75.5	0.74	2.1	2.3	1.9	4.2	60
MSB 100L1-6	1.5	6.77	3.92	2.26	6.47	3.72	2.16	6.20	3.59	2.07	935	78.5	79.9	78.2	0.74	2.05	2.35	1.8	5	61
MSB 100L2-6	2.2	9.87	5.71	3.29	9.44	5.43	3.15	9.04	5.23	3.01	950	77	78.4	77.8	0.76	2.2	2.2	1.3	6	63
MSB 112M-6	2.2	9.3	5.38	3.10	8.89	5.11	2.96	8.52	4.93	2.84	925	79.2	81.8	81.7	0.78	1.9	2.25	1.75	4.7	64
MSB 112L-6	3	12.9	7.49	4.31	12.4	7.12	4.13	11.9	6.86	3.95	950	79	80.9	80.9	0.77	2.2	2.2	1.3	6	64
MSB 132S-6	3	12.5	7.22	4.16	11.9	6.86	3.98	11.4	6.61	3.81	955	82.5	84.5	84.3	0.77	1.7	2.15	1.45	5.3	64
MSB 132M1-6	4	16.2	9.39	5.40	15.5	8.92	5.17	14.9	8.59	4.95	965	85.2	85.8	84.4	0.76	2.3	2.9	1.6	6.6	68
MSB 132M2-6	5.5	21.5	12.4	7.16	20.6	11.8	6.9	19.7	11.4	6.6	960	85.9	87.2	86.8	0.78	2.5	2.7	1.7	6.7	68
MSB 132L-6	7.5	30.1	17.4	10.0	28.8	16.5	9.6	27.6	15.9	9.2	960	85	86.4	86.4	0.77	2	2	1.3	6.5	68
MSB 160M-6	7.5	30.3	17.6	10.1	29.0	16.7	9.7	27.8	16.1	9.3	970	86.8	87.6	86.7	0.75	2.1	2.7	1.65	6.1	68
MSB 160L-6	11	42.5	24.6	14.2	40.7	23.4	13.6	39.0	22.5	13.0	965	87.2	88.6	88.6	0.78	2.25	2.35	1.5	6.9	73
MSB 711-8	0.09	0.97	0.56	0.32	0.93	0.54	0.31	0.89	0.52	0.30	680	44.9	39.6	31.1	0.54	2.3	2.6	2.2	2.4	50
MSB 712-8	0.12	1.15	0.67	0.38	1.10	0.63	0.37	1.06	0.61	0.35	680	51.7	47.1	38.4	0.53	2.5	2.75	2.5	2.7	50
MSB 713-8	0.18	1.51	0.88	0.50	1.45	0.83	0.48	1.39	0.80	0.46	670	55.8	52.5	44.4	0.56	2.3	2.5	2.4	2.8	52
MSB 801-8	0.18	1.24	0.72	0.41	1.18	0.68	0.39	1.13	0.66	0.38	705	64.4	61.3	53.9	0.59	2.2	2.65	2	3.6	52
MSB 802-8	0.25	1.64	0.95	0.55	1.57	0.90	0.52	1.51	0.87	0.50	700	66.3	64.3	57.8	0.60	2.1	2.5	2.05	3.5	52
MSB 90S-8	0.37	2.37	1.37	0.79	2.26	1.30	0.75	2.17	1.25	0.72	690	66.3	65.4	59.6	0.62	1.55	2	1.5	3.2	56
MSB 90L-8	0.55	3.26	1.89	1.09	3.12	1.79	1.04	2.99	1.73	1.00	680	69.0	69.9	65.8	0.64	1.6	1.95	1.6	3.3	56
MSB 100L1-8	0.75	3.88	2.24	1.29	3.71	2.13	1.24	3.55	2.06	1.18	700	75.2	74.8	70.8	0.68	2.1	2.55	1.95	4.4	59
MSB 100L2-8	1.1	5.16	2.99	1.72	4.94	2.84	1.65	4.73	2.74	1.58	685	74.6	76.7	75.1	0.75	1.8	2.15	1.65	4.1	59
MSB 112M-8	1.5	7.24	4.19	2.41	6.93	3.98	2.31	6.64	3.84	2.21	700	78.3	78.9	76.4	0.69	2.2	2.5	2.1	4.5	61
MSB 132S-8	2.2	10.0	5.81	3.35	9.6	5.52	3.20	9.20	5.32	3.07	705	78.8	80.7	79.6	0.73	1.8	2.25	1.65	4.5	64
MSB 132M-8	3	13.0	7.51	4.33	12.4	7.14	4.14	11.9	6.88	3.96	705	80.9	82.6	81.9	0.75	2.1	2.5	1.8	5.1	64
MSB 160M1-8	4	18.0	10.4	5.99	17.2	9.88	5.73	16.5	9.53	5.49	710	81.7	83.0	82.0	0.72	1.8	2.25	1.5	4.7	68
MSB 160M2-8	5.5	23.4	13.5	7.79	22.4	12.9	7.45	21.4	12.4	7.14	715	84.6	85.7	84.9	0.73	2.15	2.55	1.6	5.2	68
MSB 160L-8	7.5	30.3	17.5	10.1	29.0	16.67	9.66	27.8	16.1	9.26	715	85.8	87.1	86.7	0.76	2.15	2.45	1.4	5.4	68

MSBCCL Series Brake Motors

Operating Principle

The direct current brake is fed by means of an electronic circuit with diode bridge (rectifier) situated inside the terminal-box. When feeding the electromagnet (5), the movable anchor (4) is attracted towards the same, thus loading the braking torque springs (9) and allowing the disk (2), equipped with friction packing and fitted on the groove hub (6) to turn solitary the motor shaft (1) by means of a key (7). By interrupting the feeding, the movable anchor (4), pushed by the braking torque springs (9), exerts a pressure upon the friction surface of the disk (2), thus causing its stopping.

Adjustment Of The Air Gap

The air gap (11) is the distance between the electromagnet (5) and the movable anchor (9).

The air gap has to be regularly checked, since due to the wear of the friction packing (2) it tends to increase.

Act on the brake adjusters (3) after having unloosen the screws (8) to bring the air gap to the required value.

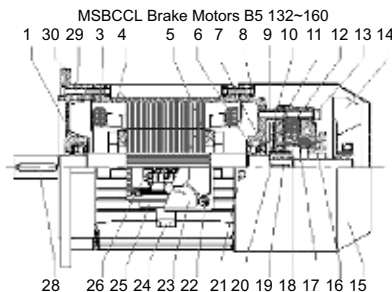
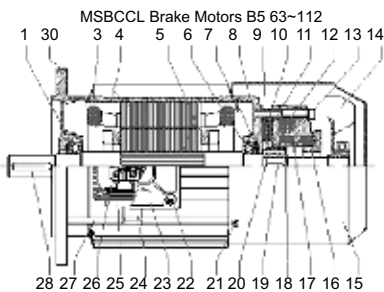
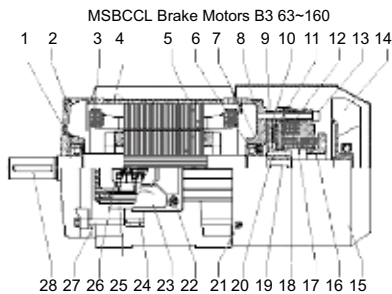
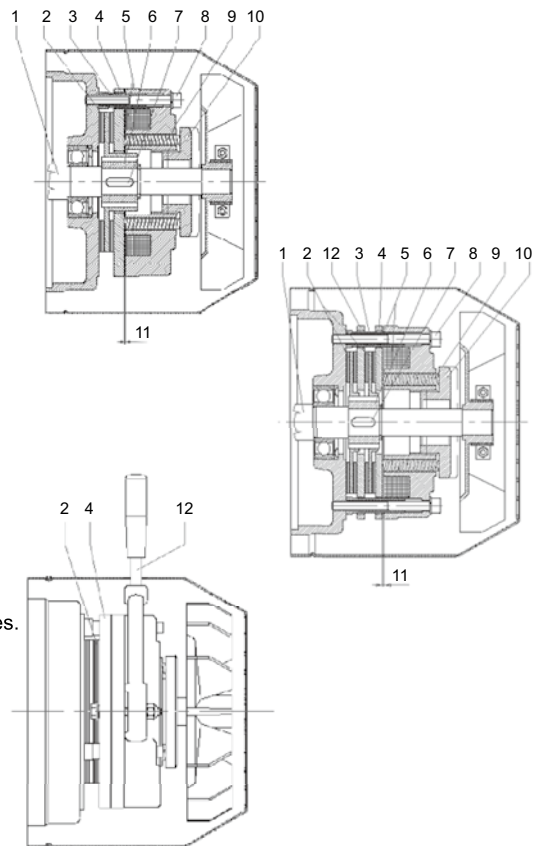
Act on the ring nut (10) which acts on the braking torque springs (9) to adjust the braking torque.

Pls. contact our technical department for information on the air gap adjustment values.

Hand Release With Lever

Upon request a hand release with lever can be supplied.

In case of a current cutoff, acting on the lever (12), the release, connected to the movable anchor (4) overcomes the springs pressure, thus detaching the movable anchor from the disc friction packing (2) allowing the shaft to turn.



Spare Parts

1. Front bearing
2. Front shield
3. Winding
4. Frame with stator package
5. Shaft with rotor
6. Rear bearing
7. Spring
8. Rear shield
9. Adjusting bush
10. Brake disc
11. Moving anchor
12. Electromagnet coil with diode
13. Fixing screws for brake
14. Cooling fan
15. Fan hood
16. Ring nut
17. Spring
18. See gearing
19. Key brake side
20. Toothed pinion
21. Fixing screw for fan hood
22. Fixing crew for terminal-box
23. Terminal-box
24. Able-holder
25. Packing
26. Terminal-block
27. Tie-bolt
28. Coupling side key
29. Fixing screw for shield
30. Flange shield